

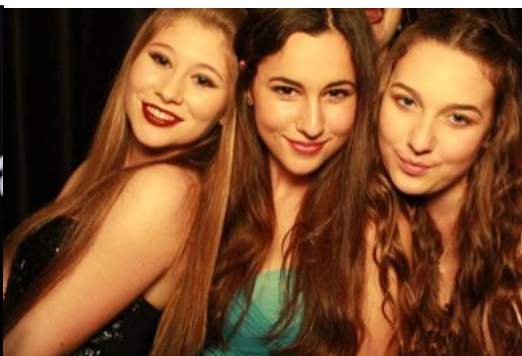
# 'NUA News

Term 2, 2015 update from  
Horowhenua College in Levin,  
New Zealand  
[www.horowhenua.school.nz](http://www.horowhenua.school.nz)

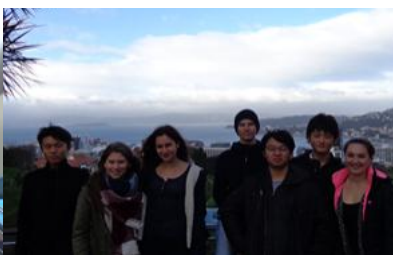


Dear Friends and Family

Term 2 has been very busy with lots of happenings and exciting events in addition to the hard work that has been going on in the classroom. I have been very impressed reading the end of stay reports that have recently been prepared for our students leaving at the end of the term. They can be very proud of their



From Friday 12 June to Saturday 13 June a group of ESOL and international students went to Wellington with Mrs Keeling and Ms Futter (ESOL teacher). The students had a great time exploring Wellington which included sight-seeing, going on the cable car (icon of Wellington), visiting Weta caves (Lord of the Rings and the Hobbit) and lots of shopping of course!



At the end of Term 2 we farewelled Ms Lorraine Futter. Ms Futter has worked with many of our international students and has been a wonderful teacher to our students. She will be missed. We wish Ms Futter all the very best for her future. Next term will be welcoming Mrs Sue Corbett who will be teaching in the ESOL Department. It is always sad to say goodbye to students who are ending their stay with us. We have loved having the following students study at Horowhenua College and wish them all the very best for their future. They are: Miriam Jung (Germany), Anna Seiche (Germany), Birgit Breinreich (Austria), Shunki Nagai (Japan) and Benedikt Gottuk (Germany). We have thoroughly enjoyed having these students study with us. They will be missed by the many friends they have made.



Contacts: [horo.int@horowhenua.school.nz](mailto:horo.int@horowhenua.school.nz) Phone 64 6 368 6159 Ext 714  
Fax 64 6 367 9210 Robyn Keeling, Director of International Education  
[rkeeling@horowhenua.school.nz](mailto:rkeeling@horowhenua.school.nz)

